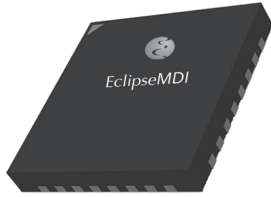


# ESL0510QFN4 Pin-Schottky Diode Limiter

0.5-1.0 GHz 2W Limiter



Product Features	
Power Handling: 1 watt CW	
Internal DC Block	
Broadband frequency response	
Low cost QFN 4mm leadless RoHS compliant/Hermetically Sealed	
Excellent VSWR	

Applications	
General Purpose power protection	
Ideal for commercial and industrial applications	

Maximum Ratings	
Storage Temperature [deg. °]	-65-° to +125-°C
Operating Temperature [deg. °]	-65-° to +95-°C
Maximum Input Power	2W CW, 100W peak
Specifications @ [° C]	+25° C

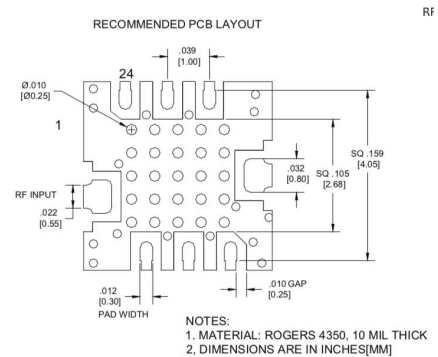
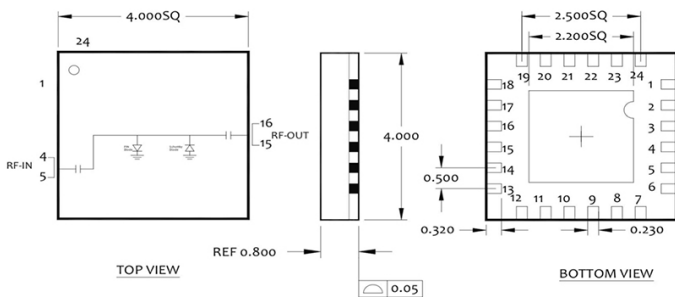
## Electrical Specifications @ +25°C

Parameters	Freq. (GHz)	Min.	Typical	Max.	Units
Insertion Loss	0.5 to 1.0		0.4	0.6	dB
VSWR	0.5 to 1.0		1.5:1	1.8:1	
Leakage Power	0.5 to 1.0		19	20	dBm
Limiting Threshold	0.5 to 1.0		6.0		dBm
CW Power Handling			1.0	2.0	dBm
Operating Temperature		-25		90	° C

**NOTES:**

1. Typical values are measured at +25-° C
2. Pins 4&5 RF Input, Pins 15&16 RF Output

**QFN 4mm Outline Drawing**



**About EclipseMDI**

ECLIPSE Microdevices is located in San Jose, California. ECLIPSE has been developing high performance analog semiconductors for use in wireless radio frequency (RF), microwave, and millimeter wave for commercial and industrial applications. ECLIPSE has formed a strategic alliances - with foundries that features leading state-of-the-art process technologies and with manufacturing facilities for high-volume production of innovative RFICs.

**Product Export Classification**  
 ECCN: EAR 99 (NLR)  
 HTS: 8542.33.0001

